



SA88

**INDUSTRIAL PARK
SENAI**

**TAMAN PERINDUSTRIAN
SUMBER ASTRAL**

Space Engineered for Infinite Possibility

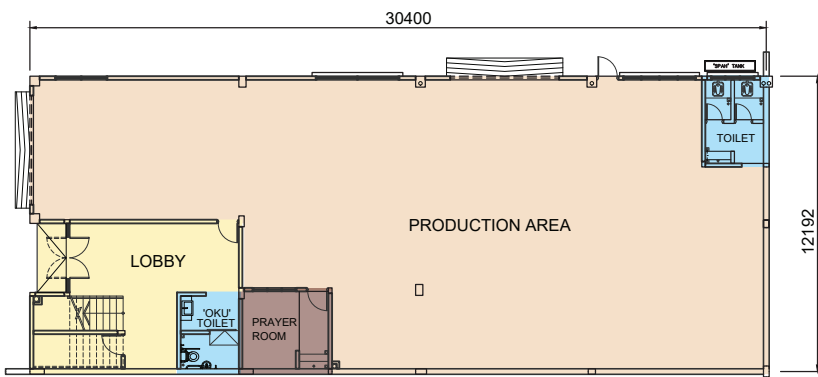
FREEHOLD



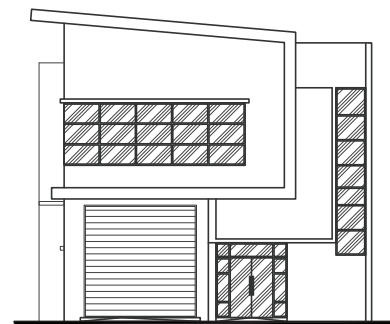
◆ 2 Storey Cluster Factory

Land Area : 7,800 sq.ft. – 13,194 sq.ft.
 Built-Up Area : 6,089 sq.ft. – 8,068 sq.ft.

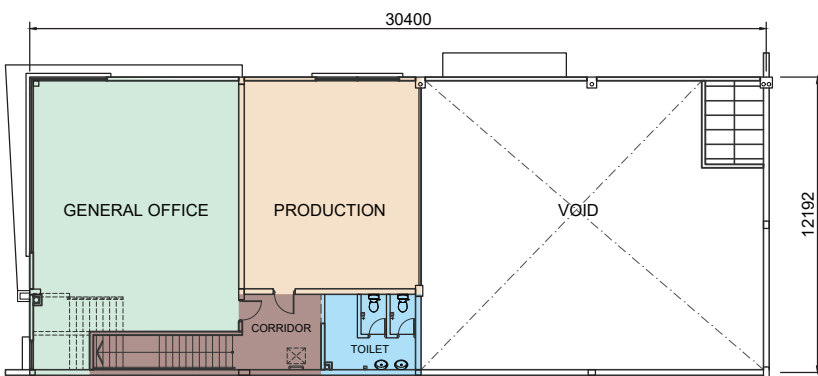
Total: 32 Units



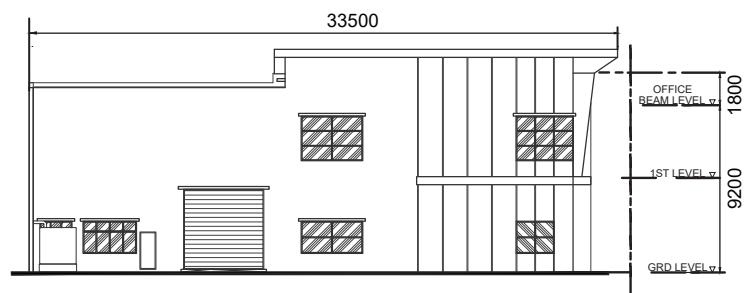
GROUND FLOOR



FRONT ELEVATION



FIRST FLOOR

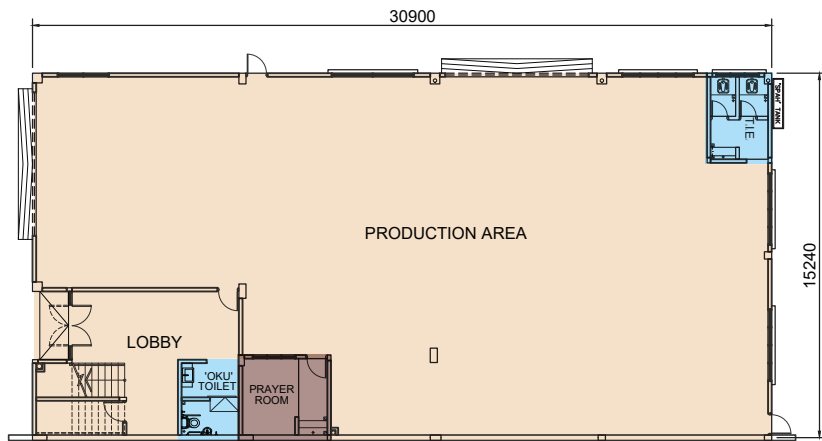


SIDE ELEVATION

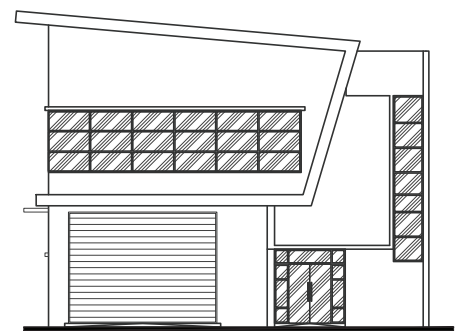
◆ 2 Storey Semi-Detached Factory

Land Area : 9,600 sq.ft. – 12,243 sq.ft.
 Built-Up Area : 7,146 sq.ft. – 9,590 sq.ft.

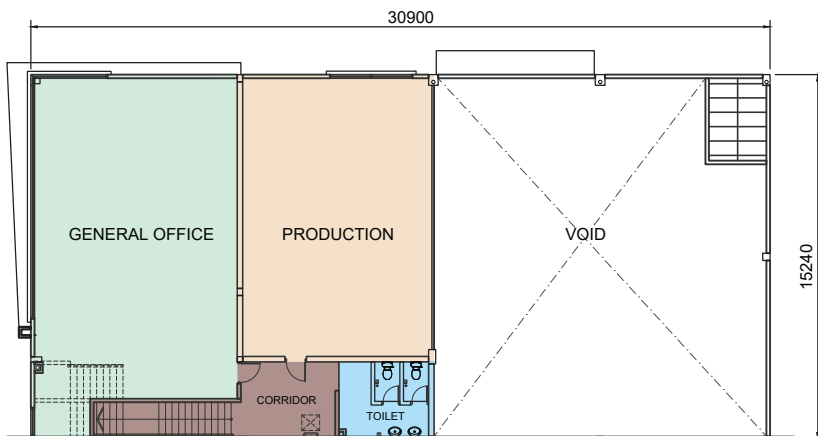
Total: 36 Units



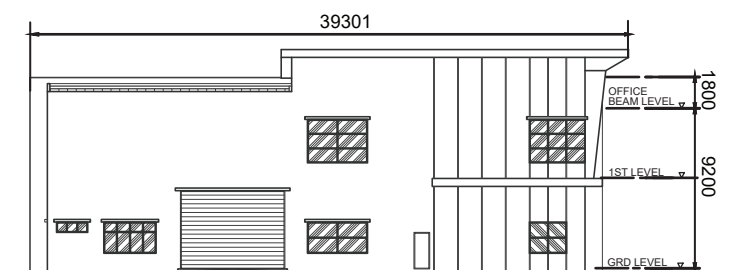
GROUND FLOOR



FRONT ELEVATION



FIRST FLOOR



SIDE ELEVATION

◆ 2 Storey Detached Factory

Land Area : 15,130 sq.ft. – 22,177 sq.ft.

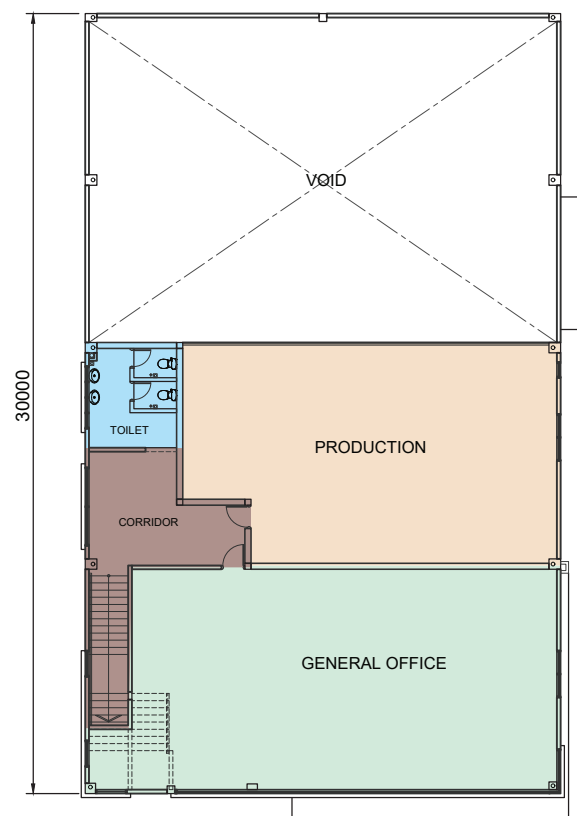
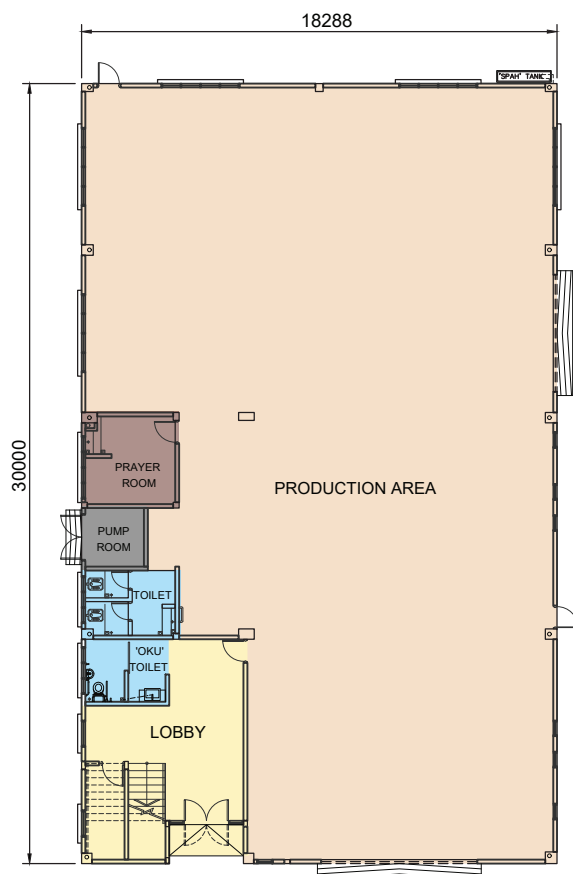
Built-Up Area : 9,291 sq.ft. – 14,793 sq.ft.

Total: 4 Units

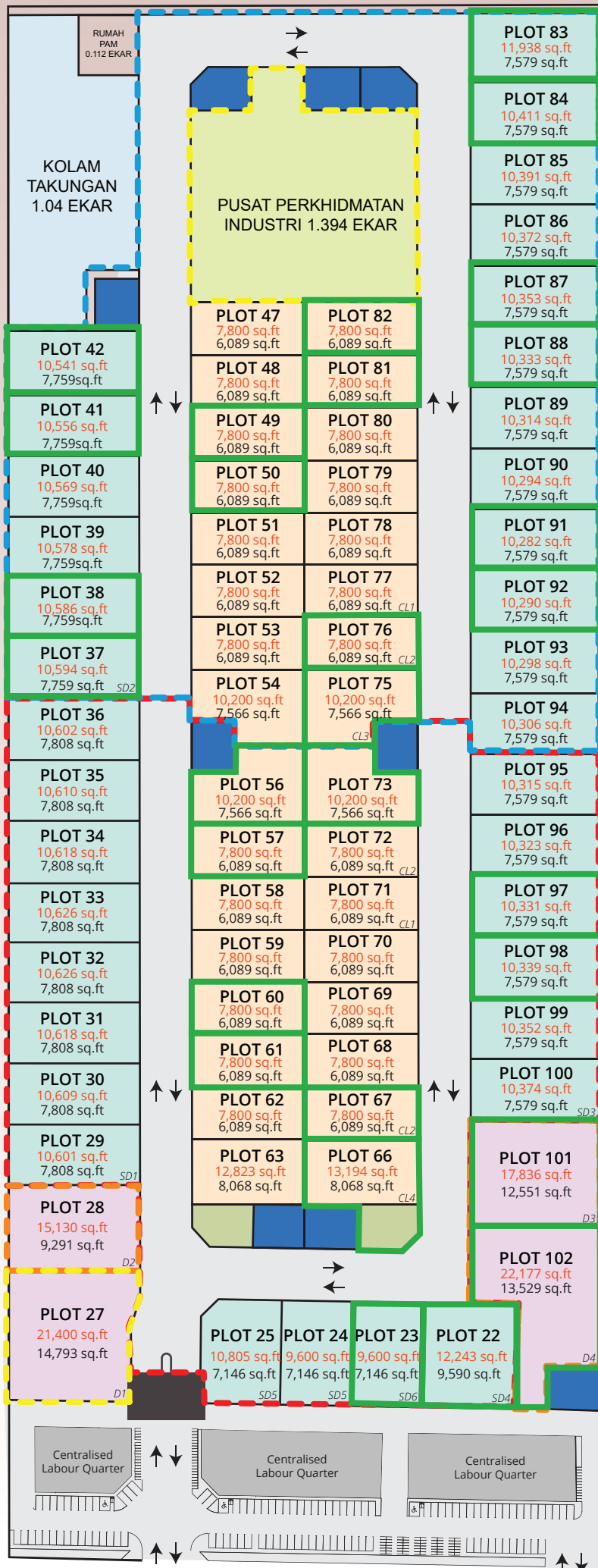


*DIMENSIONS OF ALL DETACHED FACTORIES ARE VARY

TYPE D2



Site Plan



S88 INDUSTRIAL PARK SENAI

· FREEHOLD ·
· MEDIUM INDUSTRY ·

2 STOREY CLUSTER FACTORY

Type CL1	Built-Up Area: 6,089 sq.ft.
Type CL2	Built-Up Area: 6,089 sq.ft.
Type CL3	Built-Up Area: 7,566 sq.ft.
Type CL4	Built-Up Area: 8,068 sq.ft.

2 STOREY SEMI-DETACHED FACTORY

Type SD1	Built-Up Area: 7,808 sq.ft.
Type SD2	Built-Up Area: 7,759 sq.ft.
Type SD3	Built-Up Area: 7,579 sq.ft.
Type SD4	Built-Up Area: 9,590 sq.ft.
Type SD5	Built-Up Area: 7,146 sq.ft.
Type SD6	Built-Up Area: 7,146 sq.ft.

2 STOREY DETACHED FACTORY

Type D1	Built-Up Area: 14,793 sq.ft.
Type D2	Built-Up Area: 9,291 sq.ft.
Type D3	Built-Up Area: 12,551 sq.ft.
Type D4	Built-Up Area: 13,529 sq.ft.

---	PHASE 1	
---	PHASE 2	
---	PHASE 3	
---	PHASE 4	
	BUMI UNIT	(29 Units)

	Main Entrance
	Centralised Labour Quarter
	TNB





◆ Spaces Engineered for Infinite Possibility

SA88 Industrial Park @ Senai is a newly established small-to-medium industrial estate offering freehold land use for medium industries. It is strategically situated in Senai, adjacent to mature and upcoming developments in the surrounding area, covering 24.7 acres. The development is designed with a focus on sustainability and limitless possibilities.



Freehold 永久产权	Prime Industrial Hub 工业旺区	Nearby Senai International Airport 毗邻士乃国际机场	Gated & Guarded 围篱与保安服务	Customization & Flexible Layout 灵活规划空间	Modern Contemporary Design 新颖外观设计	Walking Distance To Dormitory 员工宿舍近在咫尺	150amp - 300amp 3 Phase Power Supply 150 - 300amp电量	9m Eave Height 屋檐高达9米	Floor Loading of 15kN/m2 地面承重15kN/m2
------------------	------------------------------	--	----------------------------	---	--------------------------------------	---	--	--------------------------	---